

**DEBASAFE™ medical**  
*Transport bags for diagnostic samples  
–tamper-evident packaging.*

**DEBATIN®**  
SAFE. PERFECT. PACKED.

**We take the environment seriously!**

For this reason, we use only environmentally-friendly polyethylene in the production of our DEBASAFE™ products. Polyethylene can be recycled, does not contaminate groundwater, and does not emit poisonous gases when burned.



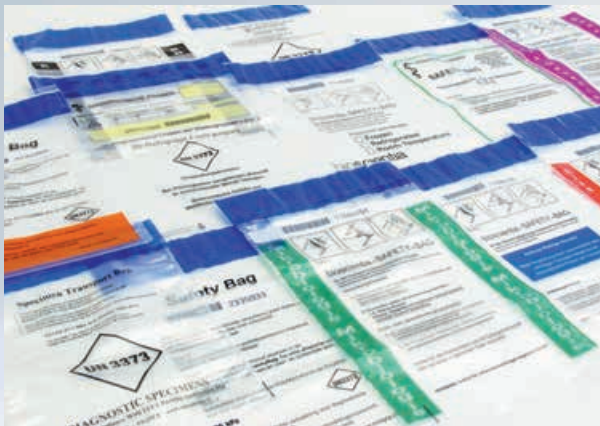
**DEBASAFE™ medical** for the transport of diagnostic samples in accordance with the Ordinance for the Transportation of Hazardous Substances. These transport bags are made of special, extremely tear-proof polyethylene film, and have a pre-fixed tamper-evident sealed closure, simplifying the transport of diagnostic samples and biological substances whilst maintaining strictest security and safety standards. DEBASAFE™ medical bags are used as secondary packaging, are liquid-tight (BAM approved) in accordance with legal requirements (ADR, packaging regulation P 620/650), and prevent risk of infection. Convenient self-adhesive closures, consecutive numbering, barcodes, clear labelling of content and correct handling simplify safe and secure transport.

## Overview of features:

- liquid-tight version (BAM approved) in accordance with legal stipulations
- for the transport of category 3 diagnostic samples / biological substances
- made of special transparent film
- welded seam: beaded seam
- up to 8 colour flexo-printing upon request for customised designs
- special version with outer document pouch available

### Handy option:

Additional outer document pouch on the rear of the bag for accompanying papers / laboratory cards.



You'd like a version made to order? No problem!  
With customised printing, DEBASAFE™ medical bags can be made to meet your individual requirements.



## Our standard range without document pouch

Article no.	Format (exterior) in mm
404 001	W 195 x H 310
404 002	W 225 x H 390
Version including finger hole	
404 003	W 485 x H 460

## Our special range with document pouch

Article no.	Format (exterior) in mm
404 001/HU	W 195 x H 310
404 002/HU	W 225 x H 390
Version including finger hole	
404 003/HU	W 485 x H 460

Please feel free to contact us if you require further information about our current range of products.